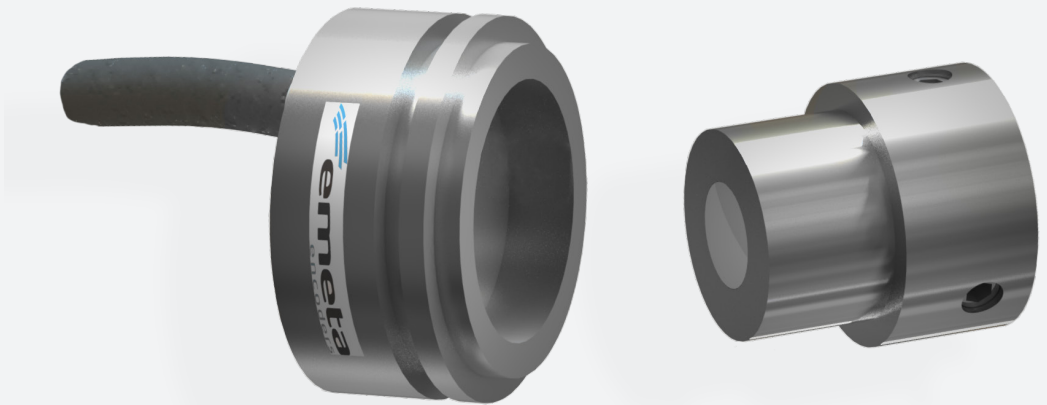


MG22 - SERIES



BEARINGLESS INCREMENTAL ENCODER Ø 22 MM

Encoder with synchro flange

- High ingress protection class IP68
- Non-contact measuring principle
- No wearing parts with long useable life
- Small dimensions $\varnothing 22\text{mm}$ & Flat design down to 6mm high

Standard: 7-35Vdc Power Supply, 100kHz
2 Square Wave Signals up to 1024 ppr

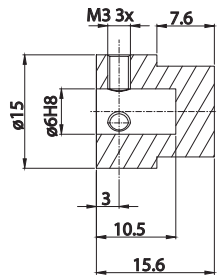
Options: Marker pulse, extended market with LED
STATUS output with alarm function
Extended warranty up to 48 months



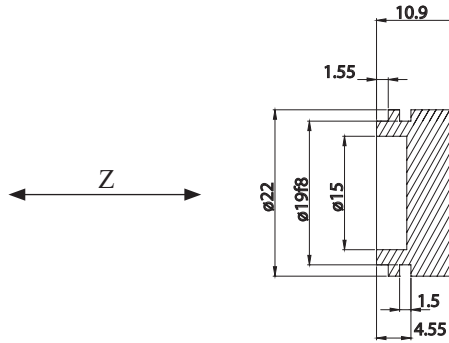
*Flexible and durable
encoder for demanding
applications*

MAGNETIC CARRIER UNIT (ROTATING)

MAGNET ACCESSORY PART NO. 106001



PICK-UP UNIT (STATIONARY)



MOUNTING TOLERANCES

dX ±3 mm
dY ±3 mm
dZ ±0.5 mm

MOUNTING CLEARANCE BETWEEN MAGNET & PICKUP

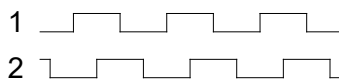
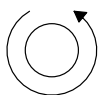
Z = 1 mm

ELECTRICAL SPECIFICATION, STANDARD

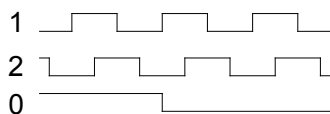
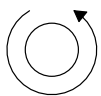
Power supply	Vcc 7–35 Vdc
Current consumption	Max 40 mA, without load
Output circuit	Line driver
Low level output volt	Max <0,5 V at 20 mA load and 20°C
High level output volt	Min >Vcc-2V at 20mA load and 20°C
Short circuit protected	Yes (thermal)
Polarity protected	Yes
Transient protected	Yes
Max load	70 mA

OUTPUT SIGNALS, MG22A & MG22C

CCW rotation seen from shaft end



OUTPUT SIGNALS, MG22D (0-PULSE = 180° MECHANICAL)



SIGNAL ACCURACY

Resolution	1 to 1024 ppr
Max frequency	100 kHz
Operating temperature	-40° to +70°C

MECHANICAL SPECIFICATION

Housing material	Aluminum, electrically conductive for increased interference protection
Encapsulation class	IP68 (IEC 60529)
Max. rotational speed	9000 rpm
Vibration	50g 20-2000 Hz (IEC 60068-2-6)
Chock	200g at 11 ms (IEC 60068-2-27)
Weight	Approx. 30 g (without cable)

CONNECTIONS

1	Axial cable, 1 m
1X	Axial cable, free cable length

STATUS

Status output Active high, indicate when magnet is within tolerance.

FUNCTION

Model	MG22A	MG22B	MG22C	MG22D	MG22N
1	Green	Green	Green	Green	Green
2	Yellow	Yellow	Yellow	Yellow	Yellow
0	NC	Gray	NC	Gray	NC
0 invert	NC	NC	NC	NC	Gray
+V	Brown	Brown	Brown	Brown	Brown
0V	White	White	White	White	White
STATUS	NC	NC	Gray	NC	NC

ORDERING CODE

Model	MG22x	6	100	1	X
Shaft ø6 mm					
Pulserate 1-1024					
Connection					
X= meter cable					

NC = Not Connected
Rev. 1 2019-09-23. Specifications in this datasheet is subject to change without prior notice.