

SHAFT COUPLING



MECHANICAL SPECIFICATION

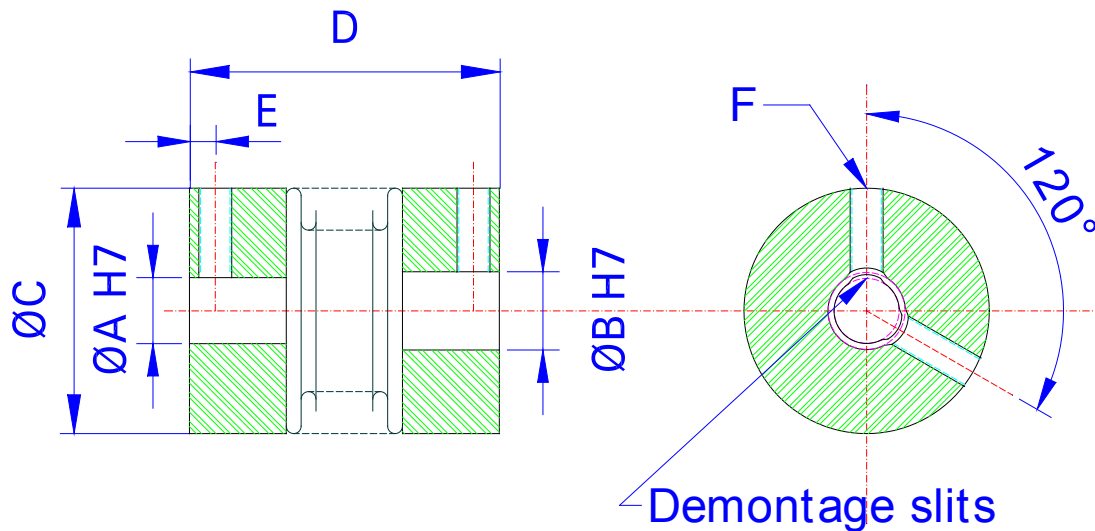
- Material
 - Bellow of stainless steel
 - Hub of aluminium
- Maximal rpm
 - Max 20 000 rpm
- Shaft tolerance
 - Hub/Shaft 0,01-0,08mm
- Max Torque
 - 1,5 x nominal torque of coupling
- Temperature range
 - 30 till + 120 °C
- Mechanical design
 - Stop screw in accordance with DIN 916



*Flexible and durable
encoder for demanding
applications*



SHAFT COUPLING (BELLOW TYPE)

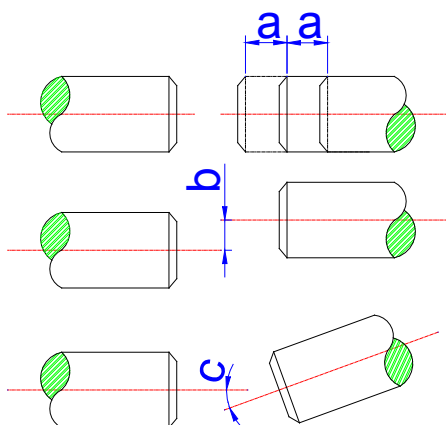


MECHANICAL SPECIFICATION

A,B Standard bore	A,B Special bore	C Outer diameter	D Total length	E mm	F Clamping screws DIN 916	Rated torque Nm	Mass moment of inertia gcm ²	Torsion stiffness Nm/rad	Max misalignment			Weight g
									axial a mm	Lateral b mm	Angular c dgr	
4	4	15	25	2	1xM3	1,0	1,3	510	0,4	0,15	1,0°	6
6	6	15	25	2	1xM3	1,0	1,8	380	0,5	0,20	1,5°	7
6	5	19	21	2	2xM3	1,5	4,7	750	0,5	0,15	1,5°	10
6	6	19	21	2	2xM3	1,5	4,7	750	0,5	0,15	1,5°	10
6	6	19	24	2	2xM3	1,5	4,7	750	0,5	0,15	1,5°	12
6	6,35	19	24	2	2xM4	1,5	4,7	750	0,5	0,15	1,5°	12
6	8	19	24	2	2xM4	1,5	4,7	750	0,5	0,15	1,5°	12
6	10	19	24	2	2xM4	1,5	4,7	750	0,5	0,15	1,5°	12
10	10	19	24	2	2xM4	1,5	4,7	750	0,5	0,15	1,5°	11
6	3/9	15	22	2	1xM3	1,0	1,3	510	0,4	0,15	1,0°	6
6	3/9	15	28	2	1xM3	1,0	2,0	320	0,6	0,25	2,0°	8
6 or 10	3/12	19	24	2	2xM3	1,5	4,7	750	0,5	0,15	1,5°	12
6 or 10	3/12	19	29	2	2xM3	1,5	5,5	700	0,7	0,20	1,5°	14
6 or 10	3/16	25	26	2,5	2xM4	2,0	15,0	1200	0,5	0,15	1,5°	22
6 or 10	3/16	25	31	2,5	2xM4	2,0	18,0	1300	0,6	0,20	1,5°	24
6 or 10	3/16	25	35	2,5	2xM4	2,0	20,0	1200	0,7	0,25	2,0°	26

The first 8 bellow couplings are ex stock

DISPLACEMENT



ORDERING CODE

Example: Axk 6 - 10 19 x 24

Bore A _____
 Bore B _____
 Outer diameter _____
 Length _____

